

Industrial Defender & Opscura Joint Solution Brief

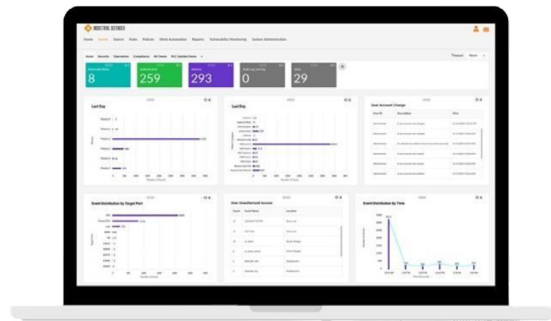
Complete OT Asset Data and Cyber Protection

INDUSTRIAL DEFENDER

Industrial Defender delivers most comprehensive OT asset data in the unified security & compliance platform. It provides deeper-level asset data and vital endpoint information, along with historical context and change detection.

With deeper asset inventory details like software versions, vulnerabilities, patches, firewall rules, and PLC key switch positions, the Industrial Defender Platform is a centralized solution for OT asset management, change and configuration management, vulnerability management, and policy compliance.

Industrial Defender seamlessly works with Opscura solutions to enhance data collection and enable additional protection capabilities



[INDUSTRIALDEFENDER.COM](https://www.industrialdefender.com)





OPSCURA

Opscura enhances data collection by integrating advanced protection capabilities into its offerings. In environments where Opscura's data collectors are deployed, they effectively gather network data from both Purdue Model Levels 1 and 2, as well as OSI Model Layer 2, and deliver it through the Industrial Defender management platform. Opscura is deployed in minutes and does not require changed to device configurations or the network.

**ELEVATES
INDUSTRIAL
SECURITY WITHOUT
DISRUPTING
EXISTING NETWORK
ARCHITECTURES OR
CONFIGURATIONS.**

Opscura's solutions not only facilitate efficient asset management within the Industrial Defender platform but also introduce additional protection capabilities, including:

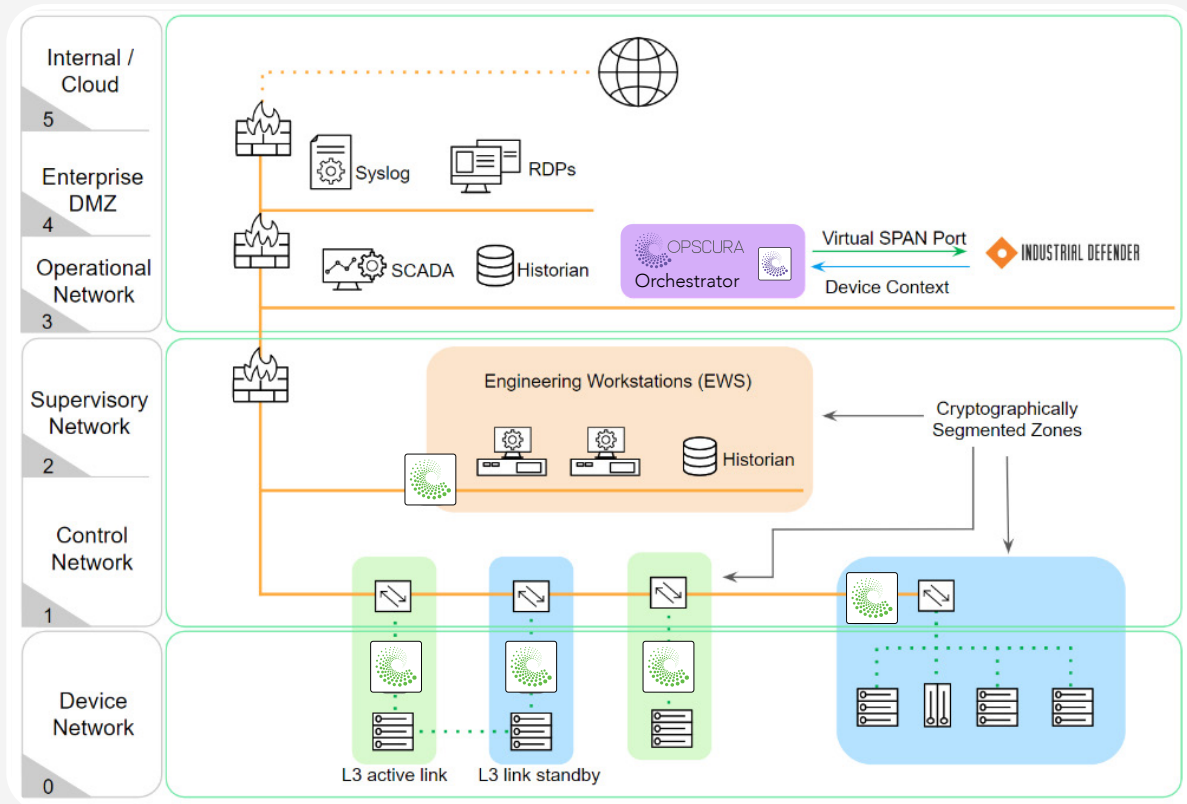
- ◆  Segmentation & data integrity
- ◆  Intrusion protection
- ◆  Protocol hardening
- ◆  Network and legacy asset cloaking

The collaboration between Industrial Defender and Opscura elevates industrial security without disrupting existing network architectures or configurations. This synergy enhances network visibility and scalability, while bolstering protection measures.

[OPSCURA.IO](https://opscura.io) >

JOINT SOLUTION ARCHITECTURE

Where Opscura solutions are deployed, they can simplify deployments and accelerate the rollout process by acting as data collectors for management in the Industrial Defender platform. This also builds a more complete network picture, incorporating additional assets monitored through Opscura.



Opscura's solutions show up as managed endpoints within the Industrial Defender platform:

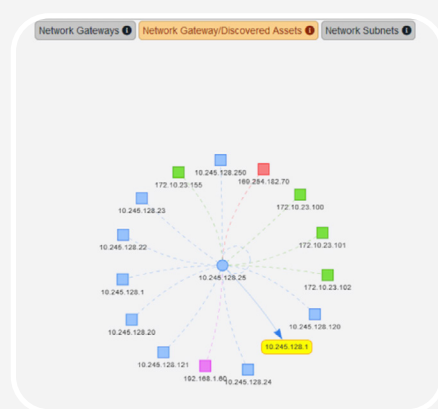
INDUSTRIAL DEFENDER ASM

Home Assets Network Search Rules Policies Work Automation Reports Patch and Vulnerability System Administration

Provisional Assets

Agents (0)
Discovered (15)
Non-local (0)
Previously Merged (0)
Previously Ignored (0)

Asset Identifier	Sensor Name	Resolved Name	IP Address	MAC Address	MAC Vendor
<input type="checkbox"/> 10.245.128.1	IDC	gateway	10.245.128.1	3c:ec:a8:97:14	Super Micro Computer, Inc.
<input type="checkbox"/> 10.245.128.120	IDC		10.245.128.120	00:50:56:9a:64:b0	VMware, Inc.
<input type="checkbox"/> 10.245.128.121	IDC		10.245.128.121	00:0c:29:6d:85:a7	VMware, Inc.
<input type="checkbox"/> 10.245.128.20	IDC		10.245.128.20	b4:45:06:e6:c9:a5	Dell Inc.
<input type="checkbox"/> 10.245.128.22	IDC		10.245.128.22	b4:45:06:e6:59:f3	Dell Inc.
<input type="checkbox"/> 10.245.128.23	IDC		10.245.128.23	90:09:d0:21:12:f1	Synology Incorporated
<input type="checkbox"/> 10.245.128.24	IDC		10.245.128.24	00:50:56:9a:5a:3d	VMware, Inc.
<input type="checkbox"/> 10.245.128.25	IDC		10.245.128.25	00:50:56:9a:48:3c	VMware, Inc.
<input type="checkbox"/> 10.245.128.250	IDC		10.245.128.250	30:b5:c2:46:09:d9	TP-LINK TECHNOLOGIES.
<input type="checkbox"/> 169.254.152.70	IDC		169.254.152.70	00:0c:29:67:d7:6b	VMware, Inc.
<input type="checkbox"/> 172.10.23.100	IDC		172.10.23.100	e4:5f:01:e1:cc:e6	Raspberry Pi Trading Ltd
<input type="checkbox"/> 172.10.23.101	IDC		172.10.23.101	e4:5f:01:e1:9c:c7	Raspberry Pi Trading Ltd
<input type="checkbox"/> 172.10.23.102	IDC		172.10.23.102	e4:5f:01:e1:9c:3f	Raspberry Pi Trading Ltd
<input type="checkbox"/> 172.10.23.155	IDC		172.10.23.155	e8:9a:8f:47:81:c7	Quanta Computer Inc.
<input type="checkbox"/> 192.168.1.60	IDC		192.168.1.60	3c:ec:a8:97:14	Super Micro Computer, Inc.



◆ About Opscura

Opscura protects and connects industrial networks with easy-to-use innovations that are safe to use deep within operational infrastructure. Validated by global partners such as Schneider Electric, Opscura reduces operational risks by protecting vulnerable legacy industrial assets and data, eliminating deep-level attacker footholds, and enriching threat visibility data. Brownfield and greenfield global customers rely on Opscura for OT cloaking, isolation, and Zero Trust authentication, together with simplified IT-OT connectivity. Learn more about Opscura's Spanish Basque region roots and follow us through www.opscura.io

◆ About Industrial Defender

Industrial Defender is the single best source of OT asset data needed to protect industrial operations and meet compliance. Established in 2006 and headquartered in the United States, Industrial Defender is the leader in providing deeper-level asset data and vital endpoint information, along with historical context and change monitoring capabilities, for addressing cyber risks across the OT environment.

Learn more at www.industrialdefender.com

The Industrial Defender Difference

Industrial Defender protects the world's critical infrastructure from cyberattacks. As the leader in OT cybersecurity innovation, the company's scalable platform is used by the largest organizations in the world to empower security stakeholders with actionable data about their OT and IIoT infrastructure, enabling them to make informed risk management decisions. Learn more at IndustrialDefender.com.

Schedule a demo

For more information

1 (877) 943-3363 • (617) 675-4206 • info@industrialdefender.com
225 Foxborough Blvd, Foxborough, MA 0203